

2021 KELLY® TIRE LINES



THE ADVANTAGES OF KELLY®

A Simple Offering For Everyday Driving

Kelly tires are a smart choice for practical drivers who simply want great all-season traction at an attractive price.

THE SPIRIT OF THE KELLY BRAND

Long History

Kelly Tires began in 1894, making rubber carriage wheels. Today, Kelly is celebrating more than 120 years in the tire business, establishing it as the oldest tire brand in the United States.

Quality Tires

Kelly continues to grow and evolve while maintaining a simple, straightforward and uncomplicated attitude. It offers everyday drivers multiple quality tire lines that are available in popular sizes to fit a broad range of today's vehicles.

Great Value

Value-conscious drivers want tires that fit within their budgets, but they don't want to sacrifice quality and all-season traction. Kelly offers it all, earning a notable reputation for delivering "A Good Deal On A Great Tire."

Smart Choice

Kelly makes drivers feel informed and empowered. Tools such as the 30-Day Test Drive Program and Tread Life Limited Warranties give drivers the confidence to choose Kelly Tires and the reassurance that they've made a good decision.

KELLY® 30-DAY TEST DRIVE PROGRAM

True Love. In 30 Days or Less.

Choosing new tires is a big commitment. That's why Kelly is proud to offer the 30-Day Test Drive Program.

Our Sales Associates can help you find the right tires. We're so confident you'll love the new Kelly tires you purchase, we'll let you try select tires risk-free for 30 days. If you decide they're not right for you? No problem. Just exchange them for a new set of Dunlop® or Goodyear® tires. Certain conditions and limitations apply.*

If the exchange is for more expensive tires, you'll be required to pay the difference in cost plus sales tax. The trial period applies only to the original select tires purchased and not to the exchanged tires. Ask your Kelly Sales Associate for all the details.

Tires Eligible for the 30-Day Test Drive Program.

When you purchase a set of the tires listed below, you can enjoy the peace of mind that comes with the 30-Day Test Drive Program.

- KELLY Edge A/S®
- KELLY Edge AT®
- KELLY Edge HP®
- KELLY Edge® HT
- KELLY Edge® MT
- KELLY Winter Access®



Limitations and Requirements.

- Tires must be returned undamaged. Tires that are damaged due to misuse, road hazards, mechanical problems related to the vehicle, use in any racing-related activities or competitive events, or tires that are removed from the original vehicle are excluded from this trial period and not eligible for this exchange.
- If the exchange is for a more expensive tire, the customer pays the difference (including sales tax). Mounting and balancing are included. Valve stems are extra if necessary.
- The replacement tires are limited to Dunlop or Goodyear tires.
- Only the tires originally purchased are covered. The replacement tires are not covered by the 30-Day Test Drive Program.
- Customer must return to the location that sold the original tires for the exchange.
- Customer must present the original sales receipt.

Claim Processing Instructions for Dealers.

- Mark the removal reason on the product adjustment claim form as "30-Day Test Drive Program." If you use GBMS to input your adjustments, enter condition code GG followed by a space and "30-Day Test Drive Program" for the tire condition.
- IMPORTANT: Record the date of the original tire purchase on the claim form.
- Return the tires to your designated Product Services Center with your next shipment of adjustment tires.
- For complete claim processing instructions refer to 30-Day Trial Product Service Bulletin on Tire-HQ™.
- If you have questions, contact the Kelly Customer Assistance Center at 1-800-321-2136 U.S., 1-800-387-3288 Canada.

*This program can be changed, modified or canceled at any time at Goodyear's discretion without advance notice.

PERFORMANCE, COMMUTER TOURING, ALL-TERRAIN, WINTER



Kelly Edge HP®	Kelly Edge A/S®	Kelly Edge® HT	Kelly Edge AT®	Kelly Edge® MT	Kelly Winter Access™
<p>A Hardworking, Quality Tire with All-Season Traction for Performance Driving</p>	<p>A Hardworking, Quality Tire with All-Season Traction for Everyday Driving</p>	<p>A Hardworking, Quality Tire for Light Trucks and SUVs with All-Season Traction for Everyday Driving</p>	<p>A Hardworking, Quality Tire for Light Trucks and SUVs with On-/Off-Road Traction for Everyday Driving</p>	<p>A Hardworking, Quality Tire for Light Trucks and SUVs with Maximum Traction for Off-Road Driving</p>	<p>A Hardworking, Quality Tire with Ice and Snow Traction for Driving in Winter Conditions</p>

TIRE SELECTOR CHART

	PERFORMANCE	PASSENGER/CUV	ON-/OFF-ROAD			WINTER
	Edge HP® (Pg. 216)	Edge AS® (Pg. 2218)	Edge™ HT (Pg. 2220)	Edge AT® (Pg. 222)	Edge® MIT (Pg. 224)	Winter Access™ (Pg. 225)
185/65R14		86H				
185/70R14		88T				
195/70R14		91T				
185/60R15		84T				
185/65R15		88H				88T
195/55R15	85V					
195/60R15		88H				88T
195/65R15		91H				91T
205/60R15		91H				
205/65R15		94H				94T
205/70R15		96T				
215/60R15		94H				
215/70R15		98T				
225/75R15				102S		
235/75R15						
LT235/75R15						
31X10.50R15LT				C		
195/50R16		84V				
195/55R16	87V					
205/50R16		87H				
205/55R16	91V	91H				94T
205/60R16		92V				92T
205/65R16		95H				
215/55R16		93H				97T
215/60R16		95H				95T
215/65R16		98T				98T
215/70R16		100H				100T
225/50R16	92V					
225/55R16	95V					
225/60R16		98H				98T
225/65R16		100T				
225/70R16		103T				
225/75R16				*104S		
235/60R16		100H				
235/65R16		103T				
235/70R16		106T		106T		106T
235/75R16				112S		
245/70R16				107T		
245/75R16			111S	111S		
255/70R16			111S	111S		
265/70R16			112S	112T		
265/75R16			116T	116T		
LT215/85R16				E		
LT225/75R16				E		
LT235/85R16				E	E	
LT245/75R16			E	E		
LT265/75R16			*E	E	E	
LT285/75R16				E	E	
LT315/75R16						
205/45R17	88V					
205/50R17		89V				
215/45R17	91W	87V				
215/50R17		91V				
215/55R17		94V				98T
215/60R17		96T				
215/65R17		99T				
225/45R17	94W	91V				
225/50R17	94W	94V				98T

*Discontinued in 2020

	PERFORMANCE	PASSENGER/CUV	ON-/OFF-ROAD			WINTER
	Edge HP® (Pg. 216)	Edge AS® (Pg. 2218)	Edge™ HT (Pg. 2220)	Edge AT® (Pg. 222)	Edge® MIT (Pg. 224)	Winter Access™ (Pg. 225)
225/55R17		97V				
225/60R17		99H				99T
225/65R17		102H				102T
235/45R17	97W					
235/50R17		96H				
235/55R17		99H				
235/60R17		102T				
235/65R17		104H				
235/70R17					*109S	
245/40R17	95W					
245/45R17	95V					
245/65R17		107T				
245/70R17			110S	110S		
255/65R17				*110S		
255/70R17			112T	112S		
265/65R17			*112T	112T		
265/70R17			115S	115T		
LT235/80R17			E	E	E	
LT245/70R17				*E		
LT245/75R17			E	E	E	
LT265/70R17			E	E	E	
LT285/70R17				E	D	
LT315/70R17					D	
35X12.50R17LT					E	
215/45R18	93W					
225/40R18	92W					
225/45R18	95V	91V				
225/55R18		98H				
235/40R18	95W					
235/45R18	98V					
235/50R18	97V					
235/55R18		100H				100T
235/60R18		103H				
235/65R18		106T				
245/40R18	97W					
245/45R18	96V					
245/60R18		105H				
255/65R18		111T				
265/60R18			*110T	*110S		
265/65R18			*114T	114S		
275/65R18			116T	116T		
LT265/70R18					E	
LT275/65R18			E	E	E	
LT275/70R18			*E	E	E	
LT285/65R18					E	
35X12.50R18LT					E	
225/55R19		99V				
235/40R19		96V				
235/45R19		95H				
235/55/R19		101H				
235/55R20		102V				
245/50R20		102H				
255/50R20		105H				
255/55R20		107H				
275/55R20			*113H	113S		
275/60R20			*115H	*115S		
LT275/65R20			E	*E		
285/45/R22			114H			

KELLY EDGE HP®

A Hardworking, Quality Tire with All-Season Traction
for Performance Driving



FEATURES

- Asymmetric tread and proven tread compound

- Wide center rib

- Solid shoulder blocks

- Blades with biting edges

- Enhanced tread block sequence

BENEFITS

- Offer all-season traction in wet, dry and snowy conditions

- Helps to provide confident handling

- Help stabilize the footprint for enhanced cornering

- Enhance handling, especially while turning

- Helps to reduce noise so drivers can enjoy a quiet ride

45000*
MILE TREAD LIFE
LIMITED WARRANTY

75,000 Kilometre
Tread Life
Limited Warranty

30day †
test



All-Season



Cornering
Stability

* See Tread Life Limited Warranty brochure for complete details.

† See page 213 for complete details.

ALL-SEASON SPORT/TOURING

PERFORMANCE

KELLY EDGE HP SPECIFICATIONS

SIZE	SERVICE DESCRIPTION	LOAD RANGE	SIDEWALL	PRODUCT CODE	MATERIAL NUMBER	APPROVED RIM WIDTH (INS)	MEASURING RIM WIDTH (INS)	SECTION WIDTH (INS)	OVERALL DIAMETER (INS)	MAX LOAD (LBS)	TREAD DEPTH (IN 32NDS)	REVS/ MILE	UTQG
195/55R15	85V	SL	VSB	356508041	225539	5.5 - 7.0	6.0	7.9	23.4	1,135	9	892	460 A A
195/55R16	87V	SL	VSB	356815041	226134	5.5 - 7.0	6.0	7.9	24.4	1,201	9	856	460 A A
205/55R16	91V	SL	VSB	356758041	225541	5.5 - 7.5	6.5	8.4	24.9	1,356	9	840	460 A A
225/50R16	92V	SL	VSB	356759041	225543	6.0 - 8.0	7.0	9.2	24.9	1,389	9	839	460 A A
225/55R16	95V	SL	VSB	356760041	225544	6.0 - 8.0	7.0	9.2	25.8	1,521	9	812	460 A A
205/45R17	88V	XL	VSB	356824041	232333	6.5 - 7.5	7.0	8.1	24.3	1,235	9	862	460 A A
215/45R17	91W	XL	VSB	356761041	225546	7.0 - 8.0	7.0	8.4	24.7	1,356	9	848	460 A A
225/45R17	94W	XL	VSB	356762041	225549	7.0 - 8.5	7.5	8.9	25.0	1,477	9	837	460 A A
225/50R17	94W	SL	VSB	356763041	225550	6.0 - 8.0	7.0	9.2	25.9	1,477	9	807	460 A A
235/45R17	97W	XL	VSB	356822041	232331	7.5 - 9.0	8.0	9.3	25.4	1,477	9	824	460 A A
245/40R17	95W	XL	VSB	356823041	232332	8.0 - 9.5	8.5	9.8	24.7	1,521	9	845	460 A A
245/45R17	95V	SL	VSB	356766041	225555	7.5 - 9.0	8.0	9.6	25.7	1,521	9	814	460 A A
215/45R18	93W	XL	VSB	356767041	225556	7.0 - 8.0	7.0	8.4	25.6	1,433	9	815	460 A A
225/40R18	92W	XL	VSB	356768041	225557	7.5 - 9.0	8.0	9.1	25.1	1,389	9	833	460 A A
225/45R18	95V	XL	VSB	356776041	225558	7.0 - 8.5	7.5	8.9	25.9	1,521	9	806	460 A A
235/40R18	95W	XL	VSB	356777041	225559	8.0 - 9.5	8.5	9.5	25.4	1,521	9	823	460 A A
235/45R18	98V	XL	VSB	356828041	232335	7.5 - 9.0	8.0	9.3	26.3	1,653	9	793	460 A A
235/50R18	97V	SL	VSB	356778041	225560	6.5 - 8.5	7.5	9.7	27.3	1,609	9	766	460 A A
245/40R18	97W	XL	VSB	356825041	232334	8.0 - 9.5	8.5	9.8	25.7	1,609	9	813	460 A A
245/45R18	96V	SL	VSB	356813041	225562	7.5 - 9.0	8.0	9.6	26.7	1,565	9	784	460 A A

Do not attempt to mount 16" rim diameter tires on 16.5" rim diameter wheels; this may result in serious injury or death.

For more complete information, go to Tire-HQ™ at www.tire-hq.com.

KELLY EDGE A/S®

A Hardworking, Quality Tire with All-Season Traction for Everyday Driving



FEATURES

- _____ Biting tread block edges
- _____ Broad tread grooves
- _____ Sturdy tread blocks
- _____ Proven tread pattern

BENEFITS

- _____ Offer all-season traction in wet, dry and snowy conditions
- _____ Help evacuate water and slush from the tread for enhanced grip
- _____ Help stabilize the tread footprint to promote long treadwear for enhanced value
- _____ Enhances handling

55000*
MILE TREAD LIFE
LIMITED WARRANTY

85,000 Kilometre
Tread Life
Limited Warranty

30day †
test



All-Season

* See Tread Life Limited Warranty brochure for complete details.

† See page 213 for complete details.

KELLY EDGE A/S SPECIFICATIONS

SIZE	SERVICE DESCRIPTION	LOAD RANGE	SIDEWALL	PRODUCT CODE	MATERIAL NUMBER	APPROVED RIM WIDTH (INS)	MEASURING RIM WIDTH (INS)	SECTION WIDTH (INS)	OVERALL DIAMETER (INS)	MAX LOAD (LBS)	TREAD DEPTH (IN 32NDS)	REVS/MILE	UTQG
185/65R14	86H	SL	VS	356826026	227277	5.0 - 6.5	5.5	7.4	23.5	1,168	9	889	500 A B
185/70R14	88T	SL	VS	356631026	227278	4.5 - 6.0	5.5	7.4	24.3	1,235	9	860	500 A B
195/70R14	91T	SL	VS	356012026	227279	5.0 - 6.5	6.0	7.9	24.8	1,356	9	843	500 A B
185/60R15	84T	SL	VS	356303026	227280	5.0 - 6.5	5.5	7.5	23.8	1,102	9	880	500 A B
185/65R15	88H	SL	VS	356382026	227281	5.0 - 6.5	5.5	7.4	24.5	1,235	9	855	500 A B
195/60R15	88H	SL	VS	356475026	227282	5.5 - 7.0	6.0	7.9	24.2	1,235	9	864	500 A B
195/65R15	91H	SL	VS	356200026	227283	5.5 - 7.0	6.0	7.9	25	1,356	9	836	500 A B
205/60R15	91H	SL	VS	356326030	227284	5.5 - 7.5	6.5	8.2	24.7	1,356	9	846	500 A B
205/65R15	94H	SL	VS	356009026	227286	5.5 - 7.5	6.0	8.3	25.5	1,477	9	821	500 A B
205/70R15	96T	SL	VS	356784026	227287	5.0 - 7.0	6.0	8.2	26.3	1,565	9	793	500 A B
215/60R15	94H	SL	VS	356122026	227285	6.0 - 7.5	7.0	8.7	25.2	1,477	9	829	500 A B
215/70R15	98T	SL	VS	356166026	227288	5.5 - 7.0	6.5	8.7	26.9	1,653	9	777	500 A B
195/50R16	84V	SL	VS	356651030	227289	5.5 - 7.0	6.0	7.9	23.7	1,102	9	886	500 A B
205/50R16	87H	SL	VS	356632030	227581	5.5 - 7.5	6.5	8.4	24.1	1,201	9	855	500 A B
205/55R16	91H	SL	VS	356272030	227290	5.5 - 7.5	6.5	8.4	24.9	1,356	9	840	500 A B
205/60R16	92V	SL	VS	356652030	227292	5.5 - 7.5	6.0	8.2	25.7	1,389	9	816	500 A B
205/65R16	95H	SL	VS	356218026	227296	5.5 - 7.5	6.0	8.2	26.5	1,521	9	789	500 A B
215/55R16	93H	SL	VS	356570030	227291	6.0 - 7.5	7.0	8.9	25.3	1,433	9	829	500 A B
215/60R16	95H	SL	VS	356125026	227293	6.0 - 7.5	6.5	8.7	26.1	1,521	9	800	500 A B
215/65R16	98T	SL	VS	356443026	227297	6.0 - 7.5	6.5	8.7	27.0	1,653	9	774	500 A B
215/70R16	100H	SL	VS	356658026	227300	5.5 - 7.0	6.5	8.7	27.9	1,764	9	749	500 A B
225/60R16	98H	SL	VS	356077026	227294	6.0 - 8.0	6.5	9.0	26.6	1,653	9	785	500 A B
225/65R16	100T	SL	VS	356655026	227298	6.0 - 8.0	6.5	9.0	27.5	1,764	9	760	500 A B
225/70R16	103T	SL	VS	356659026	227301	6.0 - 7.5	6.5	9.0	28.4	1,929	9	736	500 A B
235/60R16	100H	SL	VS	356575026	227295	6.5 - 8.5	7.0	9.5	27.1	1,764	9	771	500 A B
235/65R16	103T	SL	VS	356621026	227299	6.5 - 8.5	7.0	9.5	28.0	1,929	9	746	500 A B
235/70R16	106T	SL	VS	356660026	227302	6.0 - 8.0	7.0	9.5	29.0	2,094	9	721	500 A B
205/50R17	89V	SL	VS	356663030	227307	5.5 - 7.5	6.5	8.4	25.1	1,279	9	832	500 A B
215/45R17	87V	SL	VS	356649030	227305	7.0 - 8.0	7.0	8.4	24.7	1,201	9	846	500 A B
215/50R17	91V	SL	VS	356664030	227308	6.0 - 7.5	7.0	8.9	25.5	1,356	9	819	500 A B
215/55R17	94V	SL	VS	356627030	227310	6.0 - 7.5	7.0	8.9	26.3	1,477	9	795	500 A B
215/60R17	96T	SL	VS	356665026	227313	6.0 - 7.5	6.5	8.7	27.2	1,565	9	768	500 A B
215/65R17	99T	SL	VS	356844026	227316	6.0 - 7.5	6.5	8.7	28.0	1,709	9	746	500 A B
225/45R17	91V	SL	VS	356305030	227306	7.0 - 8.5	7.5	8.9	25.0	1,356	9	837	500 A B
225/50R17	94V	SL	VS	356819030	230589	6.0 - 8.0	7.0	9.2	25.9	1,477	9	807	500 A B
225/55R17	97V	SL	VS	356225030	227311	6.0 - 8.0	7.0	9.2	26.8	1,609	9	780	500 A B
225/60R17	99H	SL	VS	356667026	227314	6.0 - 8.0	6.5	9.0	27.6	1,709	9	756	500 A B
225/65R17	102H	SL	VS	356674026	227317	6.0 - 8.0	6.5	9.0	28.5	1,874	9	733	500 A B
235/50R17	96H	SL	VS	356829030	233547	6.5 - 8.5	7.5	9.7	26.3	1,565	9	795	500 A B
235/55R17	99H	SL	VS	356221030	227312	6.5 - 8.5	7.5	9.7	27.2	1,709	9	768	500 A B
235/60R17	102T	SL	VS	356673026	227315	6.5 - 8.5	7.0	9.5	28.1	1,874	9	744	500 A B
235/65R17	104H	SL	VS	356229026	227318	6.5 - 8.5	7.0	9.5	29.1	1,984	9	719	500 A B
245/65R17	107T	SL	VS	356676026	227319	7.0 - 8.5	7.0	9.8	29.5	2,149	11	708	500 A B
225/45R18	91V	SL	VS	356689030	227583	7.0 - 8.5	7.5	8.9	25.9	1,356	9	806	500 A B
225/55R18	98H	SL	VS	356841026	227324	6.0 - 8.0	7.0	9.2	27.8	1,653	9	753	500 A B
235/55R18	100H	SL	VS	356681030	227325	6.5 - 8.5	7.5	9.7	28.1	1,764	9	744	500 A B
235/60R18	103H	SL	VS	356683026	227327	6.5 - 8.5	7.0	9.5	29.1	1,929	9	718	500 A B
235/65R18	106T	SL	VS	356685026	227330	6.5 - 8.5	7.0	9.5	30.0	2,094	9	696	500 A B
245/60R18	105H	SL	VS	356684026	227328	7.0 - 8.5	7.0	9.8	29.6	2,039	10	707	500 A B
255/65R18	111T	SL	VS	356687026	227331	7.0 - 9.0	7.5	10.2	31.1	2,403	11	673	500 A B
225/55R19	99V	SL	VS	356892030	235405	6.0 - 8.0	7.0	9.2	28.8	1,709	9	726	500 A B
235/40R19	96V	XL	VS	356893030	235406	8.0 - 9.5	8.5	9.5	26.4	1,565	9	791	500 A B
235/45R19	95H	SL	VS	356919030	235403	7.5 - 9.0	8.0	9.3	27.4	1,521	9	764	500 A B
235/55R19	101H	SL	VS	356831026	234169	6.5 - 8.5	7.5	9.7	29.2	1,819	9	716	500 A B
235/55R20	102V	SL	VS	356895030	235407	6.5 - 8.5	7.5	9.7	30.2	1,874	9	693	500 A B
245/50R20	102H	SL	VS	356897030	235409	7.0 - 8.5	7.5	10.0	29.7	1,874	9	704	500 A B
255/50R20	105H	SL	VS	356890030	235404	7.0 - 9.0	8.0	10.4	30.1	2,039	9	695	500 A B
255/55R20	107H	SL	VS	356896030	235408	7.0 - 9.0	8.0	10.4	30.1	2,149	10	695	500 A B

Do not attempt to mount 16" rim diameter tires on 16.5" rim diameter wheels; this may result in serious injury or death.

For more complete information, go to Tire-HQ™ at www.tire-hq.com.

COMMUTER TOURING

KELLY EDGE® HT

A Hardworking, Quality Tire for Light Trucks and SUVs
with All-Season Traction for Everyday Driving



FEATURES	BENEFITS
Proven tread pattern	For confidence in all-season conditions and a comfortable ride
Broad tread grooves	Help evacuate water and slush from the tread for enhanced grip
Reinforced center rib	Enhances handling and promotes even wear
Sturdy shoulder blocks	Help stabilize the tread footprint to promote long treadwear for enhanced value

60000*
MILE TREAD LIFE
LIMITED WARRANTY

95,000 Kilometre
Tread Life
Limited Warranty
Metric Sizes Only

30day †
test

50000*
MILE TREAD LIFE
LIMITED WARRANTY

80,000 Kilometre
Tread Life
Limited Warranty
LT Sizes Only



On-Road

* See Tread Life Limited Warranty brochure for complete details.

† See page 213 for complete details.

KELLY EDGE HT SPECIFICATIONS

SIZE	SERVICE DESCRIPTION	LOAD RANGE	SIDEWALL	PRODUCT CODE	MATERIAL NUMBER	APPROVED RIM WIDTH (INS)	MEASURING RIM WIDTH (INS)	SECTION WIDTH (INS)	OVERALL DIAMETER (INS)	MAX LOAD (LBS)	TREAD DEPTH (IN 32NDS)	REVS/ MILE	UTQG
245/75R16	111S	SL	OWL	357566313	234245	6.5 - 8.0	7	9.8	30.5	2,403	12	686	600 A B
255/70R16	111S	SL	OWL	357567313	234246	6.5 - 8.5	7.5	10.2	30.1	2,403	12	695	600 A B
265/70R16	112S	SL	OWL	357564313	234242	7.0 - 9.0	8	10.7	30.6	2,469	12	682	600 A B
265/75R16	116T	SL	OWL	357023313	238653	7.0 - 9.0	7.5	10.5	31.7	2,756	12	660	600 A B
245/70R17	110S	SL	OWL	357675313	234244	6.5 - 8.0	7	9.8	30.6	2,337	12	684	600 A B
255/70R17	112T	SL	OWL	357007313	234258	6.5 - 8.5	7.5	10.2	31.1	2,469	12	672	600 A B
*265/65R17	112T	SL	BSL	357338297	235303	7.5 - 9.5	8	10.7	30.6	2,469	12	684	600 A B
265/70R17	115S	SL	OWL	357001313	234241	7.0 - 9.0	8	10.7	31.7	2,679	12	660	600 A B
*265/60R18	110T	SL	BSL	357085297	235302	7.5 - 9.5	8	10.7	30.5	2,337	12	685	600 A B
*265/65R18	114T	SL	BSL	357003297	235304	7.5 - 9.5	8	10.7	31.5	2,601	12	663	600 A B
275/65R18	116T	SL	OWL	357759313	234248	7.5 - 9.5	8	11	32.1	2,756	12	651	600 A B
*275/55R20	113H	SL	BSL	357005297	234257	7.5 - 9.5	8.5	11.2	31.9	2,535	12	655	600 A B
*275/60R20	115H	SL	BSL	357008297	234262	7.5 - 9.5	8	11	33	2,679	12	633	600 A B
285/45R22	114H	XL	BSL	357002297	234255	9.5 - 10.5	9.5	11.2	32.1	2,601	12	651	600 A B
KELLY EDGE HT LIGHT TRUCK													
LT245/75R16	120R	E	BSL	357469297	234249	6.5 - 8.0	7	9.8	30.5	3,042	15	683	
*LT265/75R16	123R	E	OWL	357475313	234251	7.0 - 8.0	7.5	10.5	31.7	3,415	15	657	
LT235/80R17	120R	E	BSL	357730297	234259	6.0 - 7.5	6.5	9.3	31.8	3,085	15	654	
LT245/75R17	121R	E	BSL	357958297	234252	6.5 - 7.5	7	9.8	31.5	3,195	15	660	
LT265/70R17	121R	E	OWL	357502313	234250	7.0 - 8.5	8	10.7	31.7	3,195	15	657	
LT275/65R18	123R	E	OWL	357965313	234260	7.5 - 9.0	8	11	32.1	3,415	15	648	
*LT275/70R18	125R	E	OWL	357511313	234253	7.0 - 8.5	8	11	33.2	3,640	15	627	
LT275/65R20	126R	E	BSL	357985297	234263	7.5 - 9.5	8	11	34.1	3,750	15	610	

*Discontinued 2020

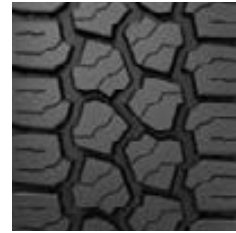
Do not attempt to mount 16" rim diameter tires on 16.5" rim diameter wheels; this may result in serious injury or death.

For more complete information, go to Tire-HQ™ at www.tire-hq.com.

NOTE: When replacing a vehicle's original equipment light truck tires with passenger car tires, the load on each replacement car tire must not exceed the maximum load stamped on the replacement car tire sidewall divided by 1.10.

KELLY EDGE AT®

A Hardworking, Quality Tire for Light Trucks and SUVs with On-/Off-Road Traction for Everyday Driving



EDGE AT TREAD PATTERN
VARIES WITH SIZE
AND APPLICATION

FEATURES

- Flared tread block edges
- Deep tread grooves
- Sturdy tread blocks
- Proven tread compound

BENEFITS

- Help shovel mud, dirt and gravel away from the tread for off-road traction
- Help evacuate water and slush from the tread for enhanced on-highway grip
- Help stabilize the footprint to promote long treadwear for enhanced value
- Enhances wet traction on the highway and helps improve endurance for off-road terrain

50000*
MILE TREAD LIFE
LIMITED WARRANTY

80,000 Kilometre
Tread Life
Limited Warranty

30day †
test



All-Terrain

* See Tread Life Limited Warranty brochure for complete details.

† See page 213 for complete details.

KELLY EDGE AT SPECIFICATIONS

SIZE	SERVICE DESCRIPTION	LOAD RANGE	SIDEWALL	PRODUCT CODE	MATERIAL NUMBER	APPROVED RIM WIDTH (INS)	MEASURING RIM WIDTH (INS)	SECTION WIDTH (INS)	OVERALL DIAMETER (INS)	MAX LOAD (LBS)	TREAD DEPTH (IN 32NDS)	REVS/MILE	UTQG
225/75R15	102S	SL	OWL	357757286	228659	6.0 - 7.5	6	8.8	28.3	1,874	12	738	560 A B
*225/75R16	104S	SL	OWL	357748286	225788	6.0 - 7.5	6	8.8	29.3	1,984	12	714	560 A B
235/70R16	106T	SL	OWL	357206286	228215	6.8 - 8.0	7	9.5	29	2,094	12	721	560 A B
235/75R16	112S	XL	OWL	357760286	228668	6.0 - 8.0	6.5	9.3	29.8	2,469	12	700	560 A B
245/70R16	107T	SL	OWL	357762286	226571	6.5 - 8.0	7	9.8	29.5	2,149	12	707	560 A B
245/75R16	111S	SL	OWL	357566286	225770	6.5 - 8.0	7	9.8	30.5	2,403	12	686	560 A B
255/70R16	111S	SL	OWL	357567286	225766	6.5 - 8.0	7.5	10.2	30.1	2,403	12	695	560 A B
265/70R16	112T	SL	OWL	357317286	221751	7.0 - 9.0	8	10.7	30.6	2,469	12	682	560 A B
265/75R16	116T	SL	OWL	357292286	225768	7.0 - 9.0	7.5	10.5	31.7	2,756	12	660	560 A B
*235/70R17	109S	XL	BSL	357672279	228662	6.0 - 8.0	7	9.5	30	2,271	12	697	560 A B
245/70R17	110S	SL	BSL	357675279	228660	6.5 - 8.0	7	9.8	30.6	2,337	12	684	560 A B
*255/65R17	110S	SL	OWL	357756286	228663	7.0 - 9.0	7.5	10.2	30.1	2,337	12	691	560 A B
255/70R17	112S	SL	OWL	357758286	228664	6.5 - 8.5	7.5	10.3	31.1	2,469	12	672	560 A B
265/65R17	112T	SL	OWL	357338286	228661	7.5 - 9.5	8	10.7	30.6	2,469	12	684	560 A B
265/70R17	115T	SL	OWL	357747286	221714	7.0 - 9.0	8	10.7	31.7	2,679	12	660	560 A B
*265/60R18	110S	SL	OWL	357525286	228666	7.5 - 9.5	8	10.7	30.5	2,337	12	685	560 A B
265/65R18	114S	SL	OWL	357644286	228667	7.5 - 9.5	8	10.7	31.5	2,601	12	663	560 A B
275/65R18	116T	SL	OWL	357759286	228665	7.5 - 9.5	8	11	32.1	2,756	12	651	560 A B
275/55R20	113S	SL	BSL	357636279	228657	7.5 - 9.5	8.5	11.2	31.9	2,535	12	655	560 A B
*275/60R20	115S	SL	BSL	357678279	228658	7.5 - 9.5	8	11	33	2,679	12	634	560 A B
KELLY EDGE AT LIGHT TRUCK													
31X10.50R15LT	109R	C	OWL	357510286	221745	7.0 - 9.0	8.5	10.6	30.5	2,270	15	685	
LT215/85R16	115R	E	BSL	357517279	221737	5.5 - 7.0	6	8.6	30.5	2,680	15	682	
LT225/75R16	115R	E	BSL	357468279	221734	6.0 - 7.0	6	8.8	29.3	2,680	15	710	
LT235/85R16	120R	E	BSL	357485279	221720	6.0 - 7.5	6.5	9.3	31.7	3,042	15	656	
LT245/75R16	120S	E	BSL	357722279	221716	6.5 - 8.0	7	9.8	30.5	3,042	15	682	
LT265/75R16	123R	E	OWL	357475286	221732	7.0 - 8.0	7.5	10.5	31.7	3,415	15	656	
LT285/75R16	126R	E	OWL	357746286	228635	7.5 - 9.0	8	11.3	33.1	3,750	15	628	
LT235/80R17	120R	E	BSL	357730279	221738	6.0 - 7.5	6.5	9.3	31.8	3,085	15	654	
*LT245/70R17	119S	E	BSL	357707279	221735	6.5 - 8.0	7	9.8	30.6	3,000	15	679	
LT245/75R17	121S	E	BSL	357727279	221736	6.5 - 7.5	7	9.8	31.5	3,195	15	660	
LT265/70R17	121S	E	BSL	357726279	221718	7.0 - 8.5	8	10.7	31.7	3,195	15	656	
LT285/70R17	121R	E	OWL	357750286	228669	7.5 - 9.0	8.5	11.5	33	3,195	15	638	
LT275/65R18	123S	E	OWL	357732286	221741	7.5 - 9.0	8	11	32.1	3,415	15	648	
LT275/70R18	125R	E	OWL	357511286	221740	7.0 - 8.5	8	11	33.4	3,640	15	623	
*LT275/65R20	126S	E	OWL	357735286	221743	7.5 - 9.5	8	11	34.1	3,750	15	610	

*Discontinued 2020

Do not attempt to mount 16" rim diameter tires on 16.5" rim diameter wheels; this may result in serious injury or death.

For more complete information, go to Tire-HQ™ at www.tire-hq.com.

NOTE: When replacing a vehicle's original equipment light truck tires with passenger car tires, the load on each replacement car tire must not exceed the maximum load stamped on the replacement car tire sidewall divided by 1.10.

KELLY EDGE[®] MT

A Hardworking, Quality Tire for Light Trucks and SUVs with Maximum Traction for Off-Road Driving



FEATURES

Proven tread pattern

Multi-directional sipes

Wide, open grooves

Stud-ready blocks

BENEFITS

For off-road confidence in all-season conditions and a quiet ride

Provide enhanced handling on wet roads

For digging through mud, sand and gravel, and clearing debris from the tread pattern

Deliver added traction in winter conditions when used with optional #16 metal studs

30day[†]
test



All-Terrain

[†] See page 213 for complete details.

KELLY EDGE MT SPECIFICATIONS

SIZE	SERVICE DESCRIPTION	LOAD RANGE	SIDEWALL	PRODUCT CODE	MATERIAL NUMBER	APPROVED RIM WIDTH (INS)	MEASURING RIM WIDTH (INS)	SECTION WIDTH (INS)	OVERALL DIAMETER (INS)	MAX LOAD (LBS)	TREAD DEPTH (IN 32NDS)	REVS/MILE
LT235/85R16	120Q	E	BSL	357605332	239550	6.0 - 7.5	6.5	9.3	31.7	3,042	18	659
LT265/75R16	123Q	E	BSL	357610332	239554	7.0 - 8.0	7.5	10.5	31.7	3,415	18	660
LT285/75R16	126P	E	BSL	357584332	239559	7.5 - 9.0	8.0	11.3	33.1	3,750	18	637
35X12.50R17LT	121Q	E	BSL	357020332	239561	8.5 - 11.0	10.0	12.5	34.8	3,195	18	598
LT235/80R17	120Q	E	BSL	357318332	239549	6.0 - 7.5	6.5	9.3	31.8	3,085	18	654
LT245/75R17	121Q	E	OWL	357290333	239551	6.5 - 7.5	7.0	9.8	31.7	3,195	18	663
LT265/70R17	121Q	E	BSL	357289332	239552	7.0 - 8.5	8.0	10.7	31.7	3,195	18	660
LT285/70R17	121Q	D	OWL	357310333	239558	7.5 - 9.0	8.5	11.5	33.0	3,195	18	638
LT315/70R17	121Q	D	BSL	357300332	239560	8.5 - 10.0	9.5	12.7	34.4	3,195	18	607
35X12.50R18LT	123Q	E	BSL	357014332	239562	8.5 - 11.0	10.0	12.5	34.8	3,415	18	598
LT265/70R18	124Q	E	BSL	357009332	239553	7.0 - 8.5	8.0	10.7	31.7	3,525	18	638
LT275/65R18	123Q	E	BSL	357301332	239555	7.5 - 9.0	8.0	11.0	32.1	3,415	18	651
LT275/70R18	125Q	E	BSL	357600332	239556	7.0 - 8.5	8.0	11.0	33.4	3,640	18	630
LT285/65R18	125Q	E	BSL	357015332	239557	8.0 - 10.0	8.5	11.5	32.6	3,640	18	639

Do not attempt to mount 16" rim diameter tires on 16.5" rim diameter wheels; this may result in serious injury or death.

For more complete information, go to Tire-HQ™ at www.tire-hq.com.

NOTE: When replacing a vehicle's original equipment light truck tires with passenger car tires, the load on each replacement car tire must not exceed the maximum load stamped on the replacement car tire sidewall divided by 1.10.

KELLY WINTER ACCESS™

A Hardworking, Quality Tire with Ice and Snow Traction
for Driving in Winter Conditions



FEATURES

Directional winter tread pattern

2D zigzag blades

Proven winter tread compound

Pinned for optional studs*

BENEFITS

Offers confident winter traction by channeling away water and slush

Enhance winter traction by biting into snow and ice

Maintains flexibility and grip at low temperatures

Ability to further enhance traction in winter driving conditions

30day †
test



Severe Snow



Ice Traction



Ultra Wet
Traction



Cornering
Stability

* Consult state and provincial laws regarding stud use. Use stud #12. See Retailer for complete details.

† See page 213 for complete details.

WINTER ACCESS SPECIFICATIONS

SIZE	SERVICE DESCRIPTION	LOAD RANGE	SIDEWALL	PRODUCT CODE	MATERIAL NUMBER	APPROVED RIM WIDTH (INS)	MEASURING RIM WIDTH (INS)	SECTION WIDTH (INS)	OVERALL DIAMETER (INS)	MAX LOAD (LBS)	TREAD DEPTH (IN 32NDS)	STUD PIN SIZE	REVS/MILE
WINTER ACCESS (CAR/MINIVAN)													
185/65R15	88T	SL	BSL	356302076	237390	5.0 - 6.5	5.5	7.5	23.8	1,235	13	12	880
195/60R15	88T	SL	BSL	356500076	237388	5.5 - 7.0	6	7.9	24.2	1,235	13	12	864
195/65R15	91T	SL	BSL	356990076	237383	5.5 - 7.0	6	7.9	25	1,356	13	12	836
205/65R15	94T	SL	BSL	356889076	237403	5.5 - 7.5	6	8.3	25.5	1,477	13	12	821
205/55R16	94T	XL	BSL	356210076	237382	5.5 - 7.5	6.5	8.4	24.9	1,477	13	12	840
205/60R16	92T	SL	BSL	356334076	237386	5.5 - 7.5	6	8.2	25.7	1,389	13	12	816
205/65R16	95T	SL	BSL	356641076	241492	5.5 - 7.5	6	8.2	26.5	1,521	13	12	789
215/55R16	97T	XL	BSL	356223076	237406	6.0 - 7.5	7	8.9	25.3	1,609	13	12	829
215/60R16	95T	SL	BSL	356217076	237385	6.0 - 7.5	6.5	8.7	26.1	1,521	13	12	800
215/65R16	98T	SL	BSL	356227076	237401	6.0 - 7.5	6.5	8.7	27	1,653	13	12	774
215/70R16	100T	SL	BSL	356222076	237407	5.5 - 7.0	6.5	8.7	27.9	1,764	13	12	749
225/60R16	98T	SL	BSL	356504076	237389	6.0 - 8.0	6.5	9	26.6	1,653	13	12	785
235/70R16	106T	SL	BSL	356660076	237408	6.0 - 8.0	7	9.5	29	2,094	13	12	721
215/50R17	95T	XL	BSL	356230076	241493	6.0 - 7.5	7	8.46	25.5	1,521	13	12	819
215/55R17	98T	XL	BSL	356220076	237409	6.0 - 7.5	7	8.9	26.3	1,653	13	12	795
215/60R17	100T	XL	BSL	356232076	241494	6.0 - 7.5	6.5	8.7	27.2	1,764	13	12	768
215/65R17	99T	SL	BSL	356235076	241495	6.0 - 7.5	6.5	8.7	28	1,709	13	12	746
225/50R17	98T	XL	BSL	356226076	237402	6.0 - 8.0	7	9.2	25.9	1,653	13	12	807
225/55R17	97T	SL	BSL	356236076	241496	6.0 - 8.0	7	9.2	26.8	1,609	13	12	780
225/60R17	99T	SL	BSL	356640076	237387	6.0 - 8.0	6.5	9	27.6	1,709	13	12	756
225/65R17	102T	SL	BSL	356215076	237384	6.0 - 8.0	6.5	9	28.5	1,874	13	12	733
235/55R17	99T	SL	BSL	356239076	241499	6.5 - 8.5	7.5	9.7	27.2	1,709	13	12	768
235/60R17	102T	SL	BSL	356673076	241501	6.5 - 8.5	7	9.5	28.1	1,874	13	12	744
235/65R17	104T	SL	BSL	356756076	241503	6.5 - 8.5	7	9.5	29.1	1,984	13	12	718
225/60R18	100T	SL	BSL	356237076	241497	6.0 - 8.0	6.5	9	28.6	1,764	13	12	730
235/50R18	97T	SL	BSL	356238076	241498	6.5 - 8.5	7.5	9.7	27.3	1,609	13	12	766
235/55R18	100T	SL	BSL	356224076	237404	6.5 - 8.5	7.5	9.7	28.1	1,764	13	12	744
235/60R18	107T	XL	BSL	356243076	241502	6.5 - 8.5	7	9.5	29.1	2,149	13	12	718
235/65R18	106T	SL	BSL	356685076	241504	6.5 - 8.5	7	9.5	30	2,094	13	12	697
245/60R18	105T	SL	BSL	356246076	241506	7.0 - 8.5	7	9.8	29.6	2,039	13	12	706
235/55R19	101T	SL	BSL	356241076	241500	6.5 - 8.5	7.5	9.7	29.2	1,819	13	12	716
245/55R19	103T	SL	BSL	356252076	241511	7.0 - 8.5	7.5	10	29.7	1,929	13	12	704
245/50R20	102T	SL	BSL	356244076	241505	7.0 - 8.5	7.5	10	29.7	1,874	13	12	704
WINTER ACCESS (SUV)													
245/65R17	107S	SL	BSL	356613076	241507	7.0 - 8.5	7	9.8	29.5	2,149	13	12	708
265/70R17	115S	SL	BSL	356247076	241508	7.0 - 9.0	8	10.7	31.7	2,679	13	12	660
275/65R18	116S	SL	BSL	356251076	241510	7.5 - 9.5	8	11	32.1	2,756	13	12	651
275/55R20	113S	SL	BSL	356834076	241509	7.5 - 9.5	8.5	11.2	31.9	2,535	13	12	655

Do not attempt to mount 16" rim diameter tires on 16.5" rim diameter wheels; this may result in serious injury or death.

For more complete information, go to Tire-HQ™ at www.tire-hq.com.